



# MONTHLY MEMBERSHIP PROGRESS REPORT

District 26 M4

Results as of: 2/28/2014

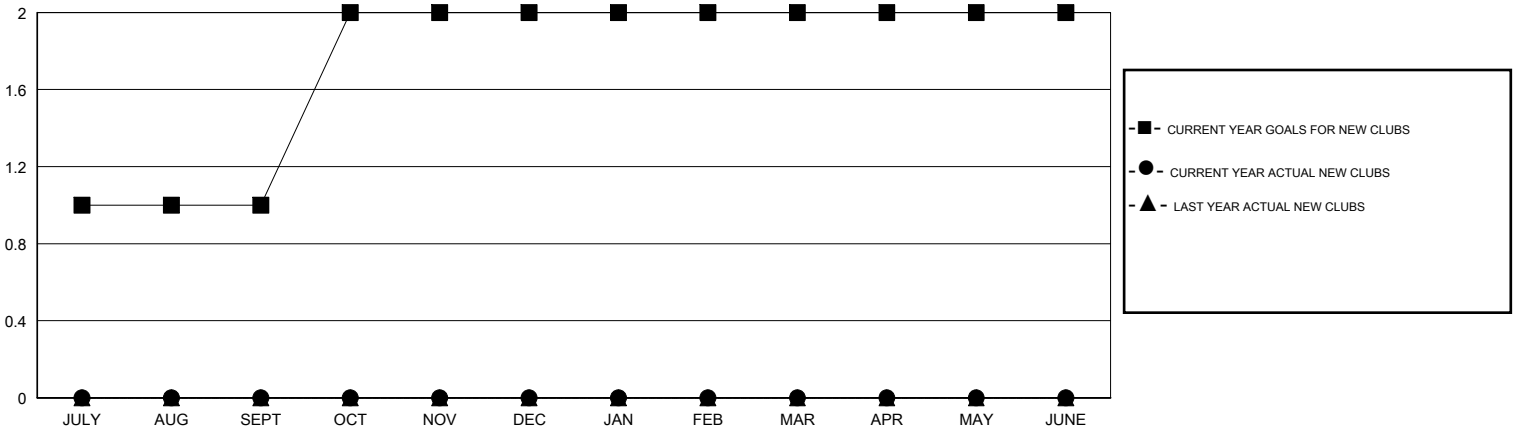
GMT: HAL GRIFFIN

LOCATION MISSOURI

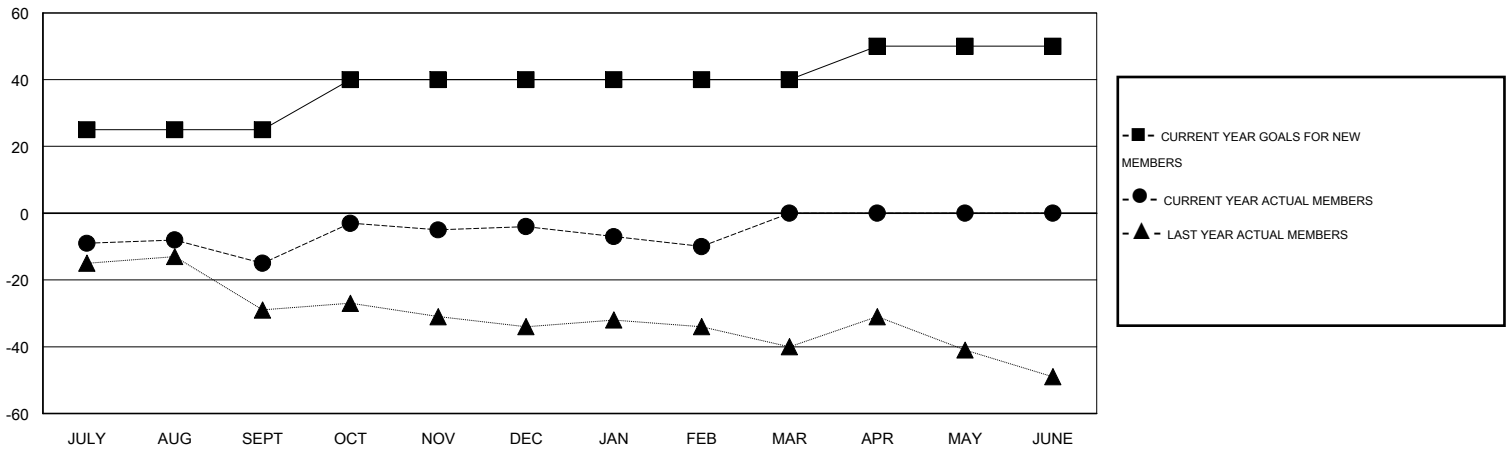
GMT CA 1

Clubs					Members				
RESULTS FOR 2013-2014					RESULTS FOR 2013-2014				
QUARTER	NEW CLUB GOAL	ACTUAL NEW CLUBS	ACTUAL DROPPED CLUBS	ACTUAL NET GAIN/LOSS	QUARTER	NEW MEMBER GOAL	ACTUAL TOTAL MEMBERS ADDED	ACTUAL DROPPED MEMBERS	ACTUAL NET GAIN/LOSS
JULY/AUG/SEPT	1	0	0	0	JULY/AUG/SEPT	25	22	37	-15
OCT/NOV/DEC	1	0	0	0	OCT/NOV/DEC	15	32	21	11
JAN/FEB/MAR	0	0	0	0	JAN/FEB/MAR	0	17	23	-6
APR/MAY/JUNE	0	0	0	0	APR/MAY/JUNE	10	0	0	0

GOALS AND ACTUAL NEW CLUBS CUMULATIVE



GOALS AND ACTUAL MEMBERS CUMULATIVE



DROPPED CLUBS: 0	29 CLUBS OF 62 ADDED 1 OR MORE NEW MEMBERS	<u>GENDER DISTRIBUTION</u>	
<u>DROPPED MEMBERS</u>		MALE	1,091 (78.55%)
DECEASED	15	FEMALE	298 (21.45%)
CLUB CANCELLED	0	<u>FAMILY UNIT MEMBERS</u> 256	
OTHER	66	<u>HEAD OF HOUSEHOLD</u> 125	
TOTAL	81	<u>NON-HEAD OF HOUSEHOLD</u> 131	

[CLICK HERE FOR HEALTH ASSESSMENT DATA](#)